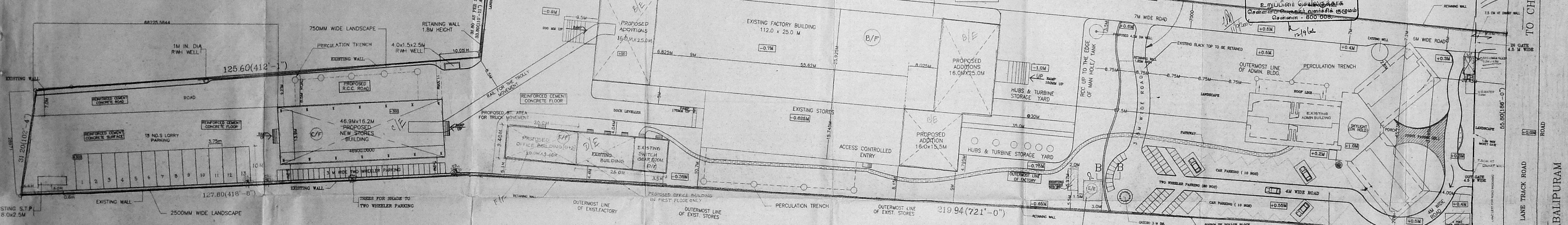
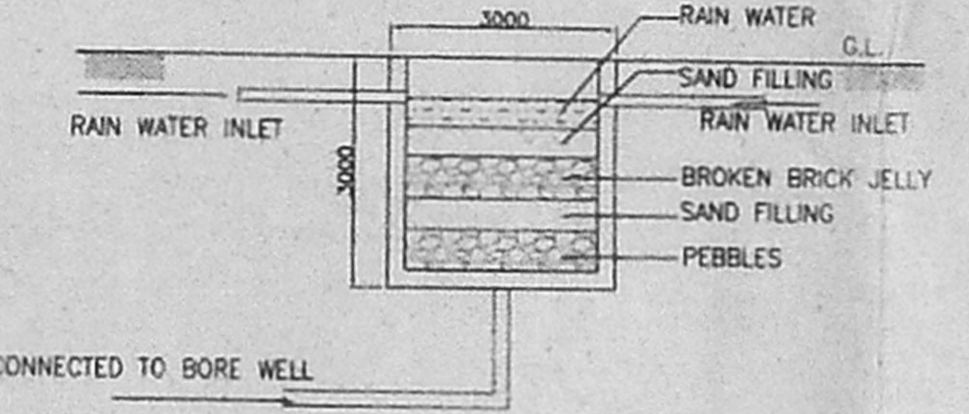


KEY PLAN NOT TO SCALE



SITE PLAN SCALE 1:400



RAIN WATER HARVEST DETAIL

**திட்ட வரைபட அனுமதி எண்**  
**ஒப்பளிக்கப்பட்டது**  
 இவ்வடிவிலுள்ள திட்ட எண் C2/22950/2005  
 நடைமுறைக்குரிய அனுமதி பெறப்பட்டுள்ள  
 வரையறுக்கப்பட்ட பகுதியில்  
**உறுப்பினர் செயல்படுத்திக்**  
 சென்னை - 600 008

INDEX

1	PROPOSED BUILDING SHOWN THIS	1
2	EXISTING ROAD SHOWN THIS	1
3	PROPOSED ROAD SHOWN THIS	1
4	EXISTING BUILDING SHOWN THIS	1
5	EXISTING ROAD SHOWN THIS	1
6	EXISTING BUILDING SHOWN THIS	1
7	EXISTING ROAD SHOWN THIS	1
8	EXISTING BUILDING SHOWN THIS	1
9	EXISTING ROAD SHOWN THIS	1
10	EXISTING BUILDING SHOWN THIS	1
11	EXISTING ROAD SHOWN THIS	1
12	EXISTING BUILDING SHOWN THIS	1
13	EXISTING ROAD SHOWN THIS	1
14	EXISTING BUILDING SHOWN THIS	1
15	EXISTING ROAD SHOWN THIS	1
16	EXISTING BUILDING SHOWN THIS	1
17	EXISTING ROAD SHOWN THIS	1
18	EXISTING BUILDING SHOWN THIS	1
19	EXISTING ROAD SHOWN THIS	1
20	EXISTING BUILDING SHOWN THIS	1

AREA STATEMENT

ITEM	AREA (SQ. M)	PERCENTAGE
ADMINISTRATION BLOCK	164.75	17.50%
EXISTING BASEMENT FLOOR	1750.77	18.75%
GROUND FLOOR - FIRST FLOOR	10245.73	110.00%
EXISTING FACTORY BUILDING	12825.00	139.00%
EXISTING SECURITY CANN	14.32	1.54%
EXISTING DRIVERS TOILET	13.28	1.43%
EXISTING SWITCHGEAR & CONTROL ROOM	141.60	1.53%
PROPOSED FACTORY STORE	1581.62	17.10%
PROPOSED NEW STORE	760.00	8.20%
PROPOSED OFFICE AREA	714.50	7.68%
TOTAL AREA	7415.23	79.78%
WHOLE AREA DETAIL	4856.81	52.16%
EXISTING APPROVED	2356.12	25.18%
PROPOSED FLOOR AREA	2356.12	25.18%

11/02/05 2 FOR APPROVAL  
 06/07/05 5+1 FOR APPROVAL/VA  
 DATE NUMBER PRINTS ISSUED TO WHOM

DESCRIPTION OF PROPOSAL & PROPERTY  
 PLAN SHOWING THE PROPOSED ADDITIONS TO THE EXISTING BUILDING IN S.N.O. 475/2-476/1, 476/7, 476/8, 476/9, 476/10, 476/11, 476/12, 476/13, 476/14, 476/15, 476/16, 476/17, 476/18, 476/19, 476/20, 476/21, 476/22, 476/23, 476/24, 476/25, 476/26, 476/27, 476/28, 476/29, 476/30, 476/31, 476/32, 476/33, 476/34, 476/35, 476/36, 476/37, 476/38, 476/39, 476/40, 476/41, 476/42, 476/43, 476/44, 476/45, 476/46, 476/47, 476/48, 476/49, 476/50, 476/51, 476/52, 476/53, 476/54, 476/55, 476/56, 476/57, 476/58, 476/59, 476/60, 476/61, 476/62, 476/63, 476/64, 476/65, 476/66, 476/67, 476/68, 476/69, 476/70, 476/71, 476/72, 476/73, 476/74, 476/75, 476/76, 476/77, 476/78, 476/79, 476/80, 476/81, 476/82, 476/83, 476/84, 476/85, 476/86, 476/87, 476/88, 476/89, 476/90, 476/91, 476/92, 476/93, 476/94, 476/95, 476/96, 476/97, 476/98, 476/99, 476/100, 476/101, 476/102, 476/103, 476/104, 476/105, 476/106, 476/107, 476/108, 476/109, 476/110, 476/111, 476/112, 476/113, 476/114, 476/115, 476/116, 476/117, 476/118, 476/119, 476/120, 476/121, 476/122, 476/123, 476/124, 476/125, 476/126, 476/127, 476/128, 476/129, 476/130, 476/131, 476/132, 476/133, 476/134, 476/135, 476/136, 476/137, 476/138, 476/139, 476/140, 476/141, 476/142, 476/143, 476/144, 476/145, 476/146, 476/147, 476/148, 476/149, 476/150, 476/151, 476/152, 476/153, 476/154, 476/155, 476/156, 476/157, 476/158, 476/159, 476/160, 476/161, 476/162, 476/163, 476/164, 476/165, 476/166, 476/167, 476/168, 476/169, 476/170, 476/171, 476/172, 476/173, 476/174, 476/175, 476/176, 476/177, 476/178, 476/179, 476/180, 476/181, 476/182, 476/183, 476/184, 476/185, 476/186, 476/187, 476/188, 476/189, 476/190, 476/191, 476/192, 476/193, 476/194, 476/195, 476/196, 476/197, 476/198, 476/199, 476/200, 476/201, 476/202, 476/203, 476/204, 476/205, 476/206, 476/207, 476/208, 476/209, 476/210, 476/211, 476/212, 476/213, 476/214, 476/215, 476/216, 476/217, 476/218, 476/219, 476/220, 476/221, 476/222, 476/223, 476/224, 476/225, 476/226, 476/227, 476/228, 476/229, 476/230, 476/231, 476/232, 476/233, 476/234, 476/235, 476/236, 476/237, 476/238, 476/239, 476/240, 476/241, 476/242, 476/243, 476/244, 476/245, 476/246, 476/247, 476/248, 476/249, 476/250, 476/251, 476/252, 476/253, 476/254, 476/255, 476/256, 476/257, 476/258, 476/259, 476/260, 476/261, 476/262, 476/263, 476/264, 476/265, 476/266, 476/267, 476/268, 476/269, 476/270, 476/271, 476/272, 476/273, 476/274, 476/275, 476/276, 476/277, 476/278, 476/279, 476/280, 476/281, 476/282, 476/283, 476/284, 476/285, 476/286, 476/287, 476/288, 476/289, 476/290, 476/291, 476/292, 476/293, 476/294, 476/295, 476/296, 476/297, 476/298, 476/299, 476/300, 476/301, 476/302, 476/303, 476/304, 476/305, 476/306, 476/307, 476/308, 476/309, 476/310, 476/311, 476/312, 476/313, 476/314, 476/315, 476/316, 476/317, 476/318, 476/319, 476/320, 476/321, 476/322, 476/323, 476/324, 476/325, 476/326, 476/327, 476/328, 476/329, 476/330, 476/331, 476/332, 476/333, 476/334, 476/335, 476/336, 476/337, 476/338, 476/339, 476/340, 476/341, 476/342, 476/343, 476/344, 476/345, 476/346, 476/347, 476/348, 476/349, 476/350, 476/351, 476/352, 476/353, 476/354, 476/355, 476/356, 476/357, 476/358, 476/359, 476/360, 476/361, 476/362, 476/363, 476/364, 476/365, 476/366, 476/367, 476/368, 476/369, 476/370, 476/371, 476/372, 476/373, 476/374, 476/375, 476/376, 476/377, 476/378, 476/379, 476/380, 476/381, 476/382, 476/383, 476/384, 476/385, 476/386, 476/387, 476/388, 476/389, 476/390, 476/391, 476/392, 476/393, 476/394, 476/395, 476/396, 476/397, 476/398, 476/399, 476/400, 476/401, 476/402, 476/403, 476/404, 476/405, 476/406, 476/407, 476/408, 476/409, 476/410, 476/411, 476/412, 476/413, 476/414, 476/415, 476/416, 476/417, 476/418, 476/419, 476/420, 476/421, 476/422, 476/423, 476/424, 476/425, 476/426, 476/427, 476/428, 476/429, 476/430, 476/431, 476/432, 476/433, 476/434, 476/435, 476/436, 476/437, 476/438, 476/439, 476/440, 476/441, 476/442, 476/443, 476/444, 476/445, 476/446, 476/447, 476/448, 476/449, 476/450, 476/451, 476/452, 476/453, 476/454, 476/455, 476/456, 476/457, 476/458, 476/459, 476/460, 476/461, 476/462, 476/463, 476/464, 476/465, 476/466, 476/467, 476/468, 476/469, 476/470, 476/471, 476/472, 476/473, 476/474, 476/475, 476/476, 476/477, 476/478, 476/479, 476/480, 476/481, 476/482, 476/483, 476/484, 476/485, 476/486, 476/487, 476/488, 476/489, 476/490, 476/491, 476/492, 476/493, 476/494, 476/495, 476/496, 476/497, 476/498, 476/499, 476/500, 476/501, 476/502, 476/503, 476/504, 476/505, 476/506, 476/507, 476/508, 476/509, 476/510, 476/511, 476/512, 476/513, 476/514, 476/515, 476/516, 476/517, 476/518, 476/519, 476/520, 476/521, 476/522, 476/523, 476/524, 476/525, 476/526, 476/527, 476/528, 476/529, 476/530, 476/531, 476/532, 476/533, 476/534, 476/535, 476/536, 476/537, 476/538, 476/539, 476/540, 476/541, 476/542, 476/543, 476/544, 476/545, 476/546, 476/547, 476/548, 476/549, 476/550, 476/551, 476/552, 476/553, 476/554, 476/555, 476/556, 476/557, 476/558, 476/559, 476/560, 476/561, 476/562, 476/563, 476/564, 476/565, 476/566, 476/567, 476/568, 476/569, 476/570, 476/571, 476/572, 476/573, 476/574, 476/575, 476/576, 476/577, 476/578, 476/579, 476/580, 476/581, 476/582, 476/583, 476/584, 476/585, 476/586, 476/587, 476/588, 476/589, 476/590, 476/591, 476/592, 476/593, 476/594, 476/595, 476/596, 476/597, 476/598, 476/599, 476/600, 476/601, 476/602, 476/603, 476/604, 476/605, 476/606, 476/607, 476/608, 476/609, 476/610, 476/611, 476/612, 476/613, 476/614, 476/615, 476/616, 476/617, 476/618, 476/619, 476/620, 476/621, 476/622, 476/623, 476/624, 476/625, 476/626, 476/627, 476/628, 476/629, 476/630, 476/631, 476/632, 476/633, 476/634, 476/635, 476/636, 476/637, 476/638, 476/639, 476/640, 476/641, 476/642, 476/643, 476/644, 476/645, 476/646, 476/647, 476/648, 476/649, 476/650, 476/651, 476/652, 476/653, 476/654, 476/655, 476/656, 476/657, 476/658, 476/659, 476/660, 476/661, 476/662, 476/663, 476/664, 476/665, 476/666, 476/667, 476/668, 476/669, 476/670, 476/671, 476/672, 476/673, 476/674, 476/675, 476/676, 476/677, 476/678, 476/679, 476/680, 476/681, 476/682, 476/683, 476/684, 476/685, 476/686, 476/687, 476/688, 476/689, 476/690, 476/691, 476/692, 476/693, 476/694, 476/695, 476/696, 476/697, 476/698, 476/699, 476/700, 476/701, 476/702, 476/703, 476/704, 476/705, 476/706, 476/707, 476/708, 476/709, 476/710, 476/711, 476/712, 476/713, 476/714, 476/715, 476/716, 476/717, 476/718, 476/719, 476/720, 476/721, 476/722, 476/723, 476/724, 476/725, 476/726, 476/727, 476/728, 476/729, 476/730, 476/731, 476/732, 476/733, 476/734, 476/735, 476/736, 476/737, 476/738, 476/739, 476/740, 476/741, 476/742, 476/743, 476/744, 476/745, 476/746, 476/747, 476/748, 476/749, 476/750, 476/751, 476/752, 476/753, 476/754, 476/755, 476/756, 476/757, 476/758, 476/759, 476/760, 476/761, 476/762, 476/763, 476/764, 476/765, 476/766, 476/767, 476/768, 476/769, 476/770, 476/771, 476/772, 476/773, 476/774, 476/775, 476/776, 476/777, 476/778, 476/779, 476/780, 476/781, 476/782, 476/783, 476/784, 476/785, 476/786, 476/787, 476/788, 476/789, 476/790, 476/791, 476/792, 476/793, 476/794, 476/795, 476/796, 476/797, 476/798, 476/799, 476/800, 476/801, 476/802, 476/803, 476/804, 476/805, 476/806, 476/807, 476/808, 476/809, 476/810, 476/811, 476/812, 476/813, 476/814, 476/815, 476/816, 476/817, 476/818, 476/819, 476/820, 476/821, 476/822, 476/823, 476/824, 476/825, 476/826, 476/827, 476/828, 476/829, 476/830, 476/831, 476/832, 476/833, 476/834, 476/835, 476/836, 476/837, 476/838, 476/839, 476/840, 476/841, 476/842, 476/843, 476/844, 476/845, 476/846, 476/847, 476/848, 476/849, 476/850, 476/851, 476/852, 476/853, 476/854, 476/855, 476/856, 476/857, 476/858, 476/859, 476/860, 476/861, 476/862, 476/863, 476/864, 476/865, 476/866, 476/867, 476/868, 476/869, 476/870, 476/871, 476/872, 476/873, 476/874, 476/875, 476/876, 476/877, 476/878, 476/879, 476/880, 476/881, 476/882, 476/883, 476/884, 476/885, 476/886, 476/887, 476/888, 476/889, 476/890, 476/891, 476/892, 476/893, 476/894, 476/895, 476/896, 476/897, 476/898, 476/899, 476/900, 476/901, 476/902, 476/903, 476/904, 476/905, 476/906, 476/907, 476/908, 476/909, 476/910, 476/911, 476/912, 476/913, 476/914, 476/915, 476/916, 476/917, 476/918, 476/919, 476/920, 476/921, 476/922, 476/923, 476/924, 476/925, 476/926, 476/927, 476/928, 476/929, 476/930, 476/931, 476/932, 476/933, 476/934, 476/935, 476/936, 476/937, 476/938, 476/939, 476/940, 476/941, 476/942, 476/943, 476/944, 476/945, 476/946, 476/947, 476/948, 476/949, 476/950, 476/951, 476/952, 476/953, 476/954, 476/955, 476/956, 476/957, 476/958, 476/959, 476/960, 476/961, 476/962, 476/963, 476/964, 476/965, 476/966, 476/967, 476/968, 476/969, 476/970, 476/971, 476/972, 476/973, 476/974, 476/975, 476/976, 476/977, 476/978, 476/979, 476/980, 476/981, 476/982, 476/983, 476/984, 476/985, 476/986, 476/987, 476/988, 476/989, 476/990, 476/991, 476/992, 476/993, 476/994, 476/995, 476/996, 476/997, 476/998, 476/999, 476/1000, 476/1001, 476/1002, 476/1003, 476/1004, 476/1005, 476/1006, 476/1007, 476/1008, 476/1009, 476/1010, 476/1011, 476/1012, 476/1013, 476/1014, 476/1015, 476/1016, 476/1017, 476/1018, 476/1019, 476/1020, 476/1021, 476/1022, 476/1023, 476/1024, 476/1025, 476/1026, 476/1027, 476/1028, 476/1029, 476/1030, 476/1031, 476/1032, 476/1033, 476/1034, 476/1035, 476/1036, 476/1037, 476/1038, 476/1039, 476/1040, 476/1041, 476/1042, 476/1043, 476/1044, 476/1045, 476/1046, 476/1047, 476/1048, 476/1049, 476/1050, 476/1051, 476/1052, 476/1053, 476/1054, 476/1055, 476/1056, 476/1057, 476/1058, 476/1059, 476/1060, 476/1061, 476/1062, 476/1063, 476/1064, 476/1065, 476/1066, 476/1067, 476/1068, 476/1069, 476/1070, 476/1071, 476/1072, 476/1073, 476/1074, 476/1075, 476/1076, 476/1077, 476/1078, 476/1079, 476/1080, 476/1081, 476/1082, 476/1083, 476/1084, 476/1085, 476/1086, 476/1087, 476/1088, 476/1089, 476/1090, 476/1091, 476/1092, 476/1093, 476/1094, 476/1095, 476/1096, 476/1097, 476/1098, 476/1099, 476/1100, 476/1101, 476/1102, 476/1103, 476/1104, 476/1105, 476/1106, 476/1107, 476/1108, 476/1109, 476/1110, 476/1111, 476/1112, 476/1113, 476/1114, 476/1115, 476/1116, 476/1117, 476/1118, 476/1119, 476/1120, 476/1121, 476/1122, 476/1123, 476/1124, 476/1125, 476/1126, 476/1127, 476



**DRAWING**  
 செ. பி. எ. கு. (சி)  
 த. எண். 2/2285/2006  
 த. தலைப்பு: ரீதியுடன்  
 தி. 2.

**SCHEDULE OF DOORS & WINDOWS**

TYPE	SIZE	DETAIL	QTY
FWID	1800x2300	DOOR/FIXED WINDOW	01
FW	1800x1200	FIXED WINDOW	28
W	1800x1200	SLIDING WINDOW	27
RS	6000x6200	ROLLING SHUTTER	2
CW1	2045x1200	CURTAIN WALL	10
CW2	3065x1200	CURTAIN WALL	6
CW3	2045x1200	CURTAIN WALL	8
V	2400x1200	ALUMINIUM VENTILATOR	12
WT	800 Ø	WIND TURBINE	12
	3000x1000	TRANSLUCENT SHEET ON ROOFING SHEET	12
	1000x2000	TRANSLUCENT SHEET ON CLADDING SHEET	24

11.08.05	2	FOR APPROVAL
06.07.05	2+1	FOR APPROVAL + V/A
DATE	NUMBER	PRINTS ISSUED

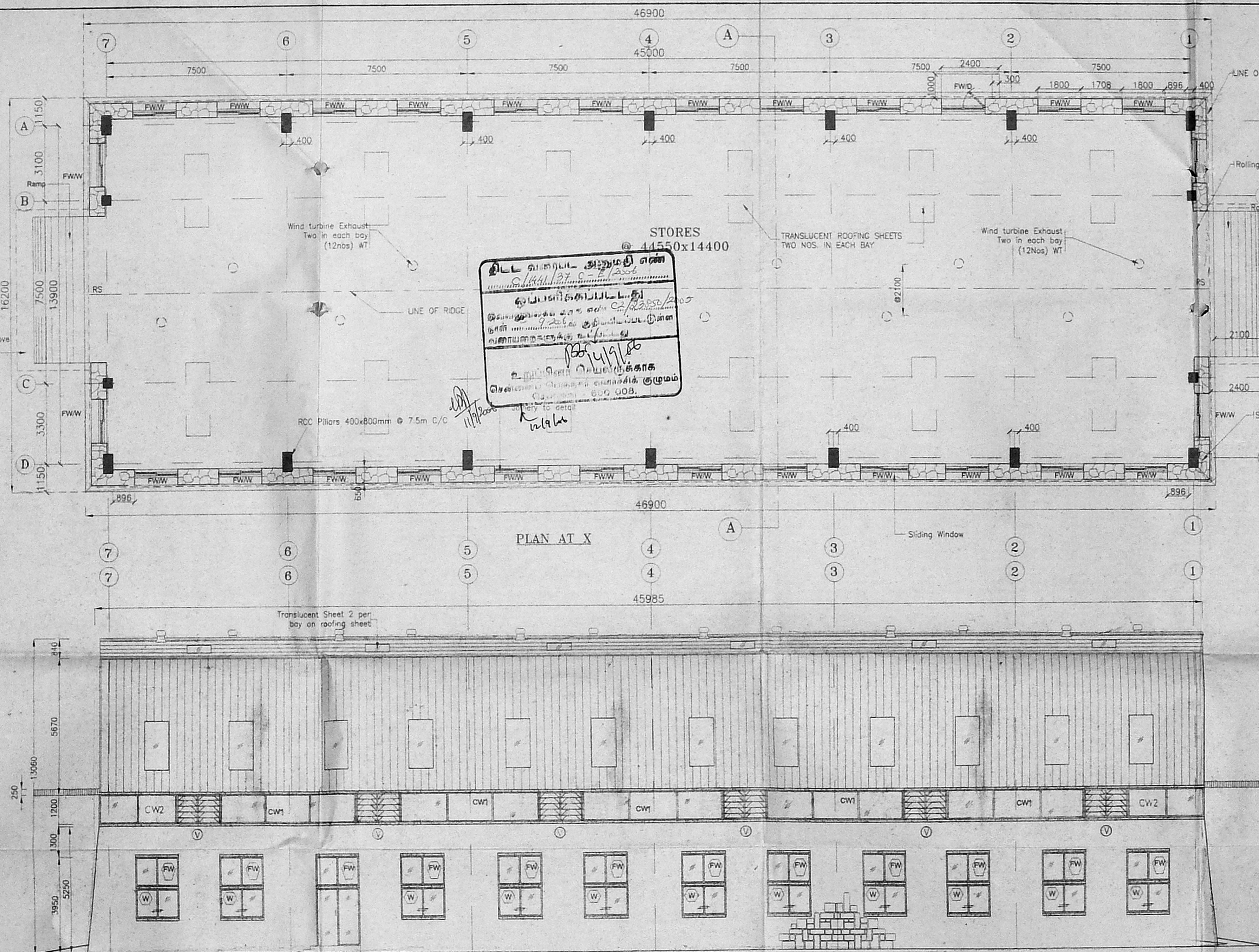
**DESCRIPTION OF PROPOSAL & PROPERTY:**  
 PROPOSED FACTORY EXPANSION FOR NEG MICON (INDIA) PVT.LTD. AT 138/298, OLD MAHABALIPURAM ROAD, SHOLINGANALLUR, CHENNAI-600119.

**DRAWING IDENTIFICATION:**  
 PLAN, ELEVATION, SECTION OF STORE BUILDING FOR NEG MICON (INDIA) PVT.LTD. AT CHENNAI.  
 BE. (Civil), AMIE - C. Engg.  
 CHARTERED ENGINEER & APPROVED VALUER,  
 CLASS I LICENSED SURVEYOR.  
 Reg No: 600/2005/2006  
 DOOR No: 11/206, 11th BLOCK  
 MOGAPPUR EAST, CHENNAI 600 037  
 (NEAR MGR ADARSH SCHOOL)  
 PHONE No: 26552050, 55252350  
 CELL No: 9841282050  
 NAME OF THE OWNER:  
 NEG MICON (INDIA) PRIVATE LIMITED

SIGNATURE OF OWNER  
 SIGNATURE OF ARCHITECT

JOB NO	ORIGNO	DATE	SCALE	DRN BY	CHECKED BY
A-389	3/3	16.06.05	1:100	M.RAJUL	SATHESH

**V.V. ARCHITECTS PRIVATE LTD.**  
 No. 11, KILPAUK GARDEN ROAD,  
 1ST STREET, KILPAUK,  
 CHENNAI (MADEAS) 600101, INDIA.  
 PHONE: +91 44 26475577, 26445723

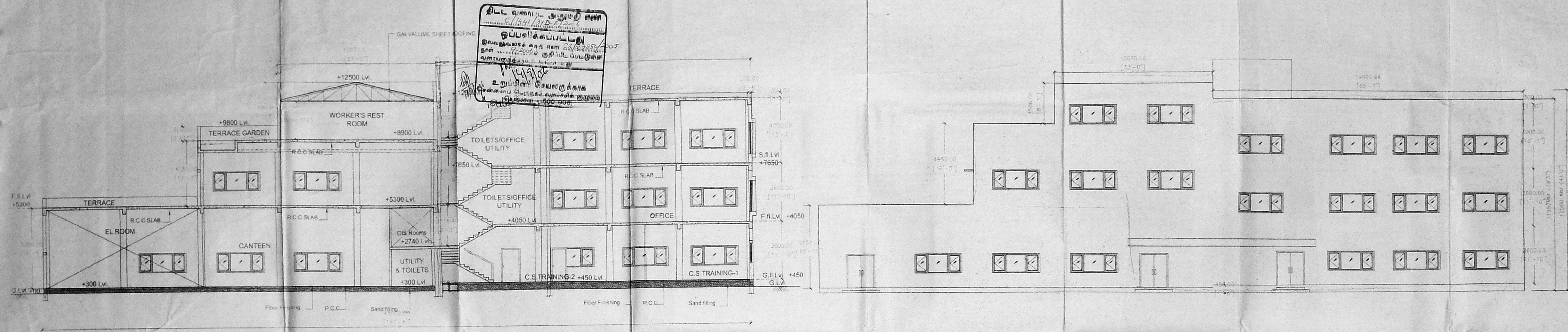


**சட்ட வரைபட துறைமுகம்**  
 திரு. எஸ். குமாரசுவாமிநாதன்  
 சட்டவரைபட வல்லுநர்  
 திரு. எ. சி. சுவாமிநாதன்  
 சட்டவரைபட வல்லுநர்  
 திரு. சி. சுவாமிநாதன்  
 சட்டவரைபட வல்லுநர்  
 திரு. சி. சுவாமிநாதன்  
 சட்டவரைபட வல்லுநர்  
 திரு. சி. சுவாமிநாதன்  
 சட்டவரைபட வல்லுநர்

SECTIONAL ELEVATION 'AA'

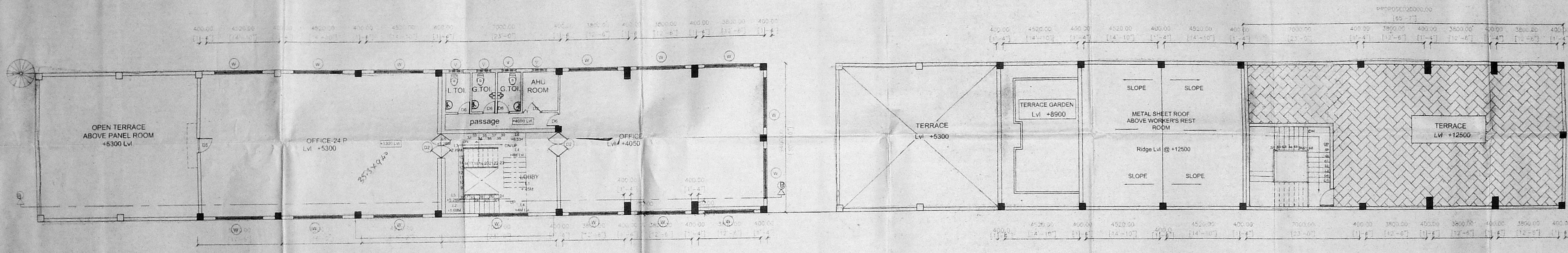
PLAN AT X

NORTH (ROAD) SIDE ELEVATION



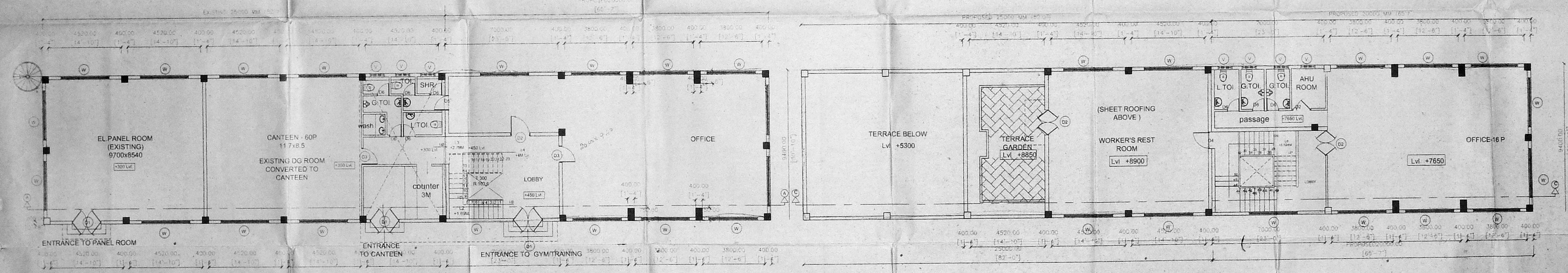
LONGITUDINAL SECTION-GG

FRONT ELEVATION



PLAN AT B-B (First floor)

PLAN AT D-D (TERRACE)



PLAN AT A-A (Ground floor)

PLAN AT C-C (Second floor)

AREA STATEMENT:

	SQM	SQFT
PROPOSED OFFICE BUILDING GROUND FLOOR	714.50	7691.00
FIRST FLOOR + SECOND FLOOR		
PROPOSED OFFICE BUILDING ABOVE DG ROOM		
<b>TOTAL AREA</b>	<b>714.50</b>	<b>7691.00</b>

17.07.06	1	FOR APPROVAL-VVA
DATE	NUMBER	PRINTS ISSUED TO WHOM

SCHEDULE OF JOINERY

TYPE	SIZE	DESCRIPTION
MD	1800X2100	MAIN DOOR
D1	1500X2100	DOOR
D2	1200X2100	DOOR
D3	1200X2100	DOOR
D4	1000X2100	DOOR
D5	900X2100	DOOR
D6	750X2100	DOOR
W	3000X1200	FIXED / OPENABLE WINDOW
V	900X750	VENTILATOR

DRAWING IDENTIFICATION:

EXISTING/ PROPOSED BUILDING

DESCRIPTION OF PROPOSAL & PROPERTY:

PLAN SHOWING THE PROPOSED ADDITIONS TO THE EXISTING BUILDING IN SITE NO. 475/6, 476/6B1, 476/7, 476/8A1, 476/8B1, 476/8A1A SHOLINGANALLUR VILLAGE FOR NEG MICON (INDIA) PVT LTD, AT 138/298 OLD MAHABALIPURAM ROAD, SHOLINGANALLUR, CHENNAI - 600 119

NAME OF THE OWNER:

NEG MICON(INDIA) PVT.LTD.

For NEG Micon (India) Private Ltd.

SIGNATURE OF THE OWNER:

E.R. K. SELVAM,  
 BE (Civil), AMIE, C.Engg., FIV  
 JAWITRED ENGINEER & APPROVED VALUER,  
 CLASS I LICENSED SURVEYOR,  
 Reg No: 60072002, 2006  
 DOOR No: 11/256 11th BLOCK  
 MOGAPPARA EAST CHENNAI 600 037  
 (NEAR MBR ADARSH SCHOOL)  
 PHONE No: 26562050, 22-252050  
 CELL No: 9841288250

SIGNATURE OF THE LICENSED SURVEYOR:

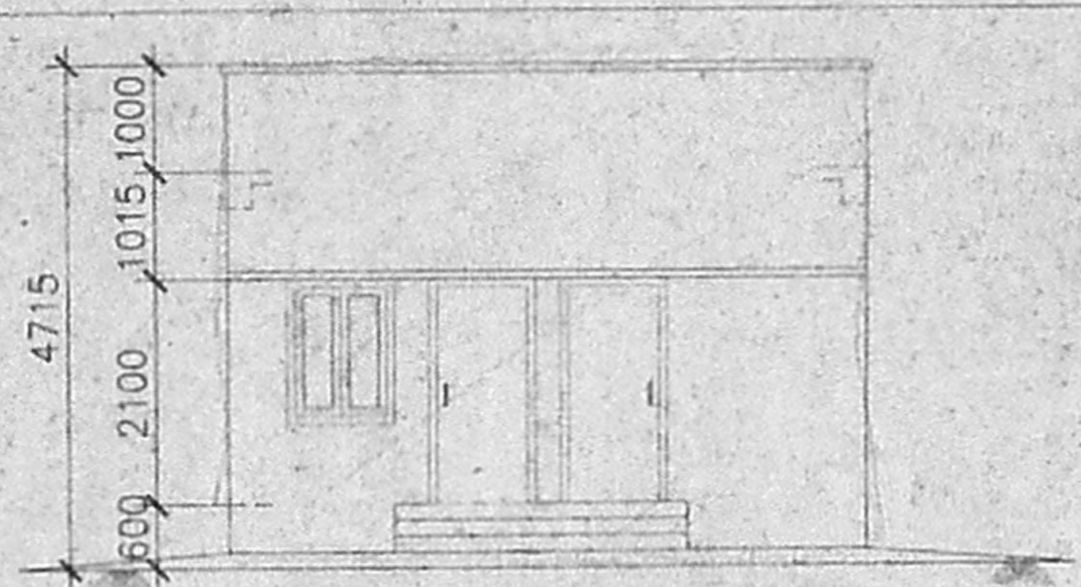
JOB NO	ORG NO	DATE	SCALE	DRN BY	CHECKED BY
A-369	02	19.07.06	1:100	GURUDEVI SATHEESH	

Architect:

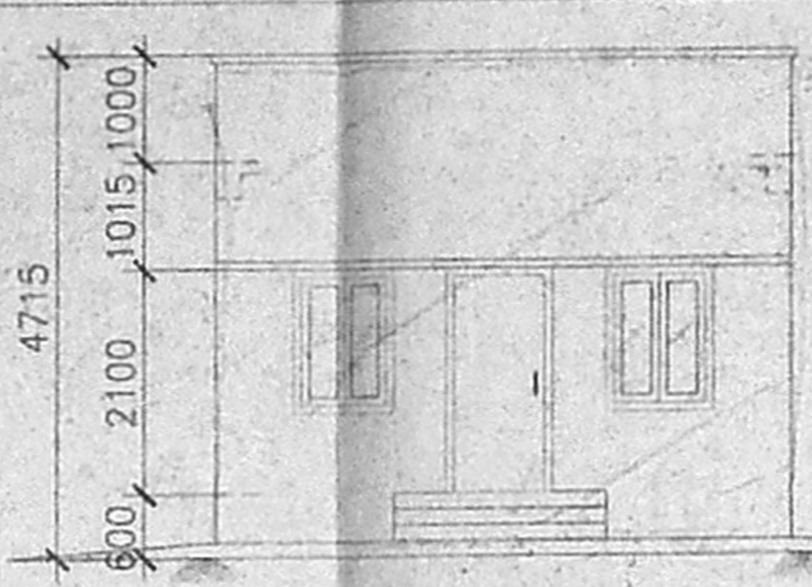
**V.V. ARCHITECTS PRIVATE LTD.**

8/8, KILPAUK GARDEN ROAD,  
 1 ST STREET, KILPAUK,  
 CHENNAI (MADRAS) 600010, IND.  
 PHONE (044) 26475577, 26443723

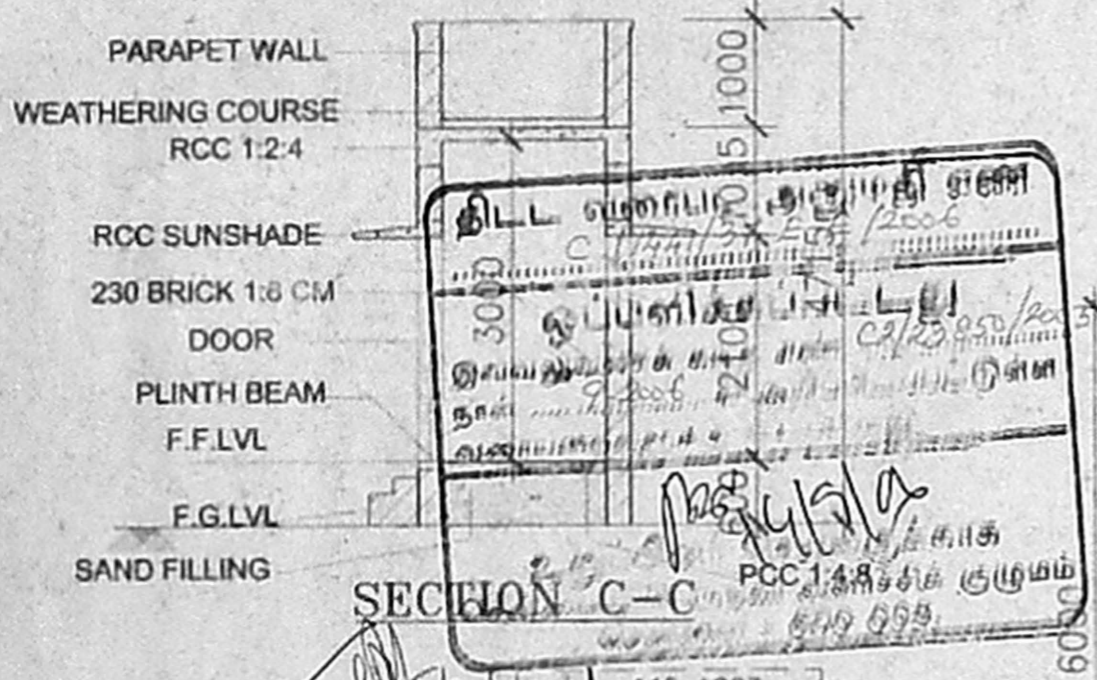
SIGNATURE



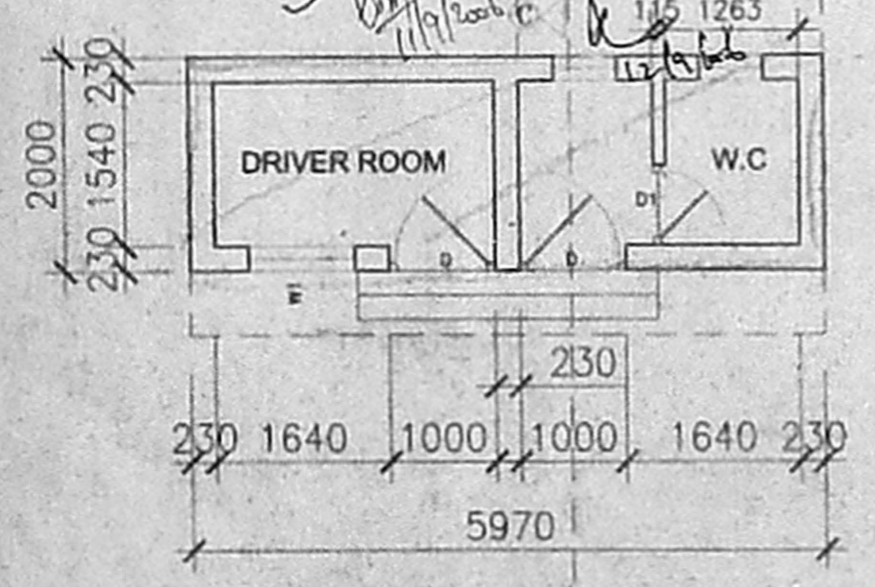
**FRONT ELEVATION FOR DRIVER'S ROOM**



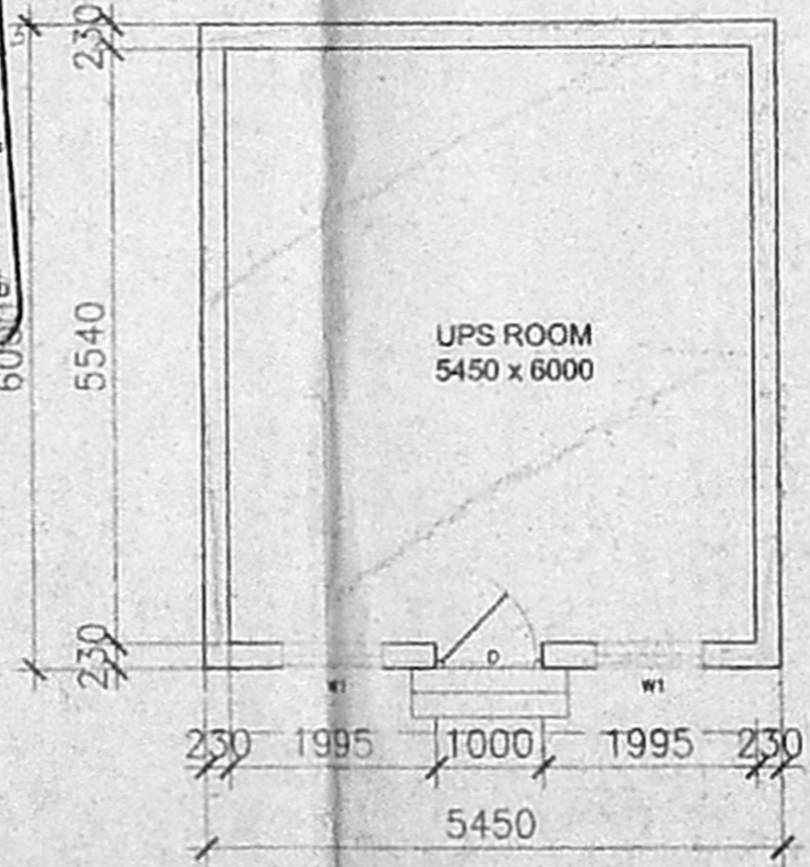
**FRONT ELEVATION FOR U P S ROOM**



**SECTION C-C**



**PLAN FOR DRIVER'S ROOM**



**PLAN FOR UPS ROOM**

DRAWING: செ. பெ. வ. கு. (19) E/E  
5. என். சி. 2/23850/2005

**SCHEDULE OF DOORS & WINDOWS**

TYPE	SIZE	கூலி DETAIL	QTY
D	1000x2100	தி. உ. DOOR	03
D1	750x2100	DOOR	01
W	1000x1350	OPENABLE WINDOW	03
V	600x600	VENTILATOR	03

PROJECT: H2 x 31

PROPOSED FACTORY EXPANSION FOR NEG MICON (INDIA) PVT. LTD, AT NO.138 298. OLD MAHALIPURAM ROAD, CHENNAI-119

DRAWING TITLE: PLAN, SECTION & ELEVATION FOR UPS & DRIVER'S ROOM

SURVEY NUMBER: 475/6, 476/6B1, 476/7, 476/8A1, 476/8B1, 476/9A1A

ER. K. SIVAM,  
B.E. (Civil), AMIE., C.Eng(I), FIV.  
CHARTERED ENGINEER & APPROVED VALUER,  
CLASS-I LICENSED SURVEYOR,  
Reg No: 600/2005, 2006.

SIGNATURE OF LICENSED SURVEYOR  
MOGAPPAI EAST, CHENNAI-600 037,  
(NEAR MGR ADARSH SCHOOL)  
PHONE NO: 26582530, 55252058

NAME OF THE OWNER  
M/S. NEG MICON (INDIA) PVT LTD  
For NEG Micon (India) Private Ltd.

SIGNATURE OF THE OWNER

JOB.NO.	DRG.NO.	DATE	SCALE	DRN.BY	CHECKED BY
A-369	NEG-AD-23	10.01.05	1:75	NATHAN	VINEETA

Architect:  
**V.V. ARCHITECTS PRIVATE LTD.**  
5/6, KILPAUK GARDEN ROAD,  
1 ST STREET, KILPAUK,  
CHENNAI (MADRAS) 600010, INDIA  
PHONE: (044) 26476577, 26443723